



Features and Specifications

Serial Interface

Interface: Software selectable RJ45 serial ports with customizable baud rate support for non-standard serial speeds
Data Rates: Software selectable standard baud rates from 300 to 230 KBaud
Connectors: 8, 16 or 32 RJ45 serial ports depending upon model
Characters: 7 or 8 data bits
Parity: Odd, even, none
Stop Bits: 1 or 2
Modem Control Signals: CTS, RTS, DTR, DCD
Flow Control: XON/XOFF (software), CTS/RTS (hardware), None

Network Interface

Ethernet 10Base-T or 100Base-TX (auto sensing and hard-coded, auto crossover)
Connector: RJ45
Standards: HTTP, HTTPS, FTP, TFTP, Telnet, TCP, UDP, LPD, XML, DHCP, SSHv2, SSLv3, SNMPv2, AutoIP, RSS, ARP, ICMP, SYSLOG, AES, SMTP, DNS, BOOTP, Traceroute

Indicators (LED)

10Base-T and 100Base-TX Link
 Ethernet Activity
 Serial Transmit Data
 Serial Receive Data
 Power
 Diagnostics

Processor

CPU: Intel XScale IXP420 Network Processor running at 266 MHz
 32k Instruction Cache
 32k Data Cache
Memory: 64 MB SDRAM
 8 MB Flash
 2 KB EEPROM

Management

Internal web server, SNMP v2 (MIBII, RS232MIB), Serial login, Telnet login, XML
Firmware: Upgradeable via the Web Manager, TFTP or FTP
Internal Web Server: Serves static and dynamic CGI-based pages and applets
Storage capacity: 6 MB using industry-standard file system

Power Input

100-240VAC, 50 to 60 Hz IEC-type cord
 20 Watts

Environmental

Operating: 0° to +50°C (32° to 122°F)
Storage: -40° to 70°C (-40 to 151°F)
Relative Humidity: 5 to 95%, non-condensing

Packaging

Case: Metal enclosure with removable wall mounts
Dimensions (L x W x H): 30.5 x 43.8 x 43.4 cm (12 x 17.25 x 17.5 in)
Weight: 4.54 Kg (10 lb)

Compliance

Ethernet: Version 2.0/IEEE 802.3 (electrical)
Ethernet II frame type

Safety Standards

UL 60950-1, CSA-22.2 No. 60950-1-03, EN60950-1, CB Report - IEC 60950-1

Security

SSL v3, SSH v2
 MD5, SHA-1
 Rijndael/AES 128-bit encryption
 3DES encryption
 ARC4 128-bit encryption
 Password protection
 IP address filtering
 Hardened OS and stack

EMC Standards:

FCC CFR 47 Part 15 Subpart B, ICES-003 Issue 4, AS/NZS CISPR 22, VCCI V-3, EN55022, EN61000-3-2, EN61000-3-3, EN55024, EN61000-4-2, EN61000-4-3, EN61000-4-4, EN61000-4-5, EN61000-4-6, EN61000-4-8, EN61000-4-11

Agency Approvals

UL/CUL, FCC, CE, TUV, C-Tick, GS, CB scheme, VCCI

Warranty

2-year limited warranty

Shipping Dimensions

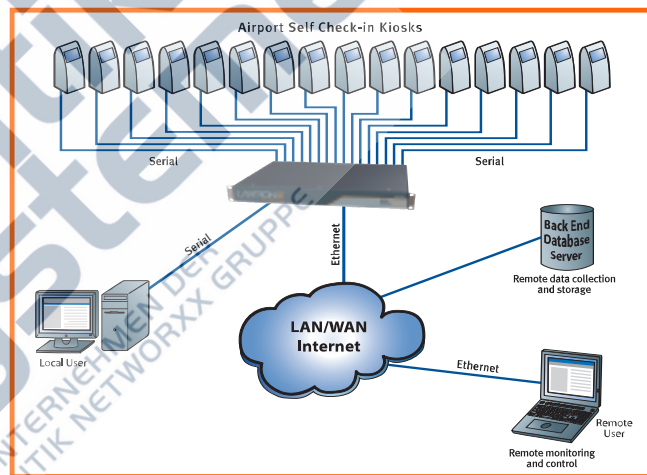
Dimensions (LxWxH): 56x48x20 cm (22x19x8 in)
Weight: 4.5 kg (10 lbs) maximum, depending on options

Included Software

Windows® 98/ME/NT/2000/XP/Vista-based DeviceInstaller™ configuration software,
 Com Port Redirector™ software and related utilities

Product Label Markings

FCC Part 15 Statement Class A Device, ICES-003 Class A Device, C-Tick, VCCI, CE Marking, UL-CUL Mark, TUV-GS Mark, RoHS



Ordering Information

Part Number	Description
EDS00812N-01	EDS8PR multi-port, secure device server; 1U, 8-port, 100-240 VAC
EDS01612N-02	EDS16PR multi-port, secure device server; 1U, 16-port, 100-240 VAC
EDS03212N-02	EDS32PR multi-port, secure device server; 1U, 32-port, 100-240 VAC
200.2066A	RJ45 to DB25M cable adapter
200.2067A	RJ45 to DB25F cable adapter
200.2069A	RJ45 to DB9M cable adapter
200.2070A	RJ45 to DB9F cable adapter
ADP010104-01	RJ45 to RJ45 rolled cable adapter, Sun Netra and Cisco equipment, 0.1 m (0.33 ft)
200.0062	Cable; RJ45, 2 m (6.6 ft)
200.0063	Cable; RJ45, 5 m (16.4 ft)
200.0064	Cable; RJ45, 10 m (32.8 ft)
200.0065	Cable; RJ45, 15 m (49.2 ft)

LANTRONIX®

15353 Barranca Parkway | Irvine | CA 92618 | USA | Tel: 800.422.7055 | Fax: 949.450.7232 | www.lantronix.com

©2009, Lantronix, Inc. Lantronix is a registered trademark, and DeviceInstaller, Evolution OS and Com Port Redirector are trademarks of Lantronix, Inc. All other trademarks are the property of their respective owners. Specifications subject to change without notice. All rights reserved. 910-505 01/09 PDF